

## Rackmount Assembly Instructions

Datavideo Part Number:  
RKM-3N3 (Includes 2U brackets for the TLM-433)  
RKM-4N7 (Includes 3U brackets for the TLM-702)

### STEP 1



### STEP 2

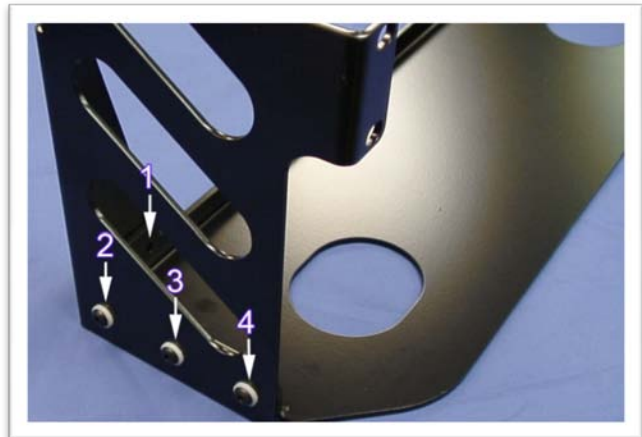


### STEP 3



### STEP 4

Install the "LEFT" and "RIGHT" uprights with the supplied hex screw, nylon washer & lock nut.



**STEP 5**

Securely fasten the hex screws, nylon washers & lock nuts.



**STEP 6**

Install the brace as shown below:

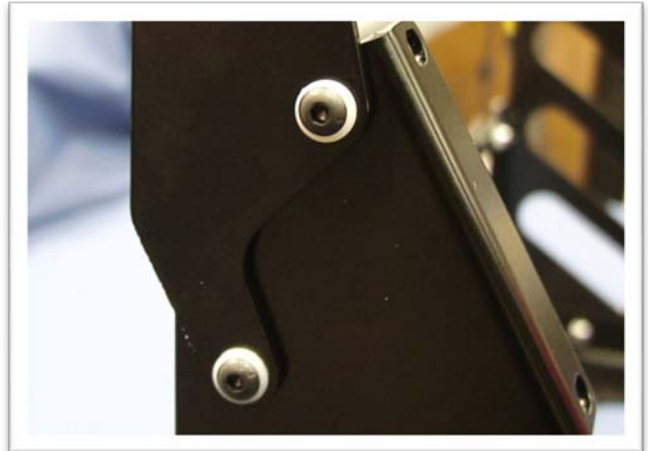


View of the completed cross brace installation



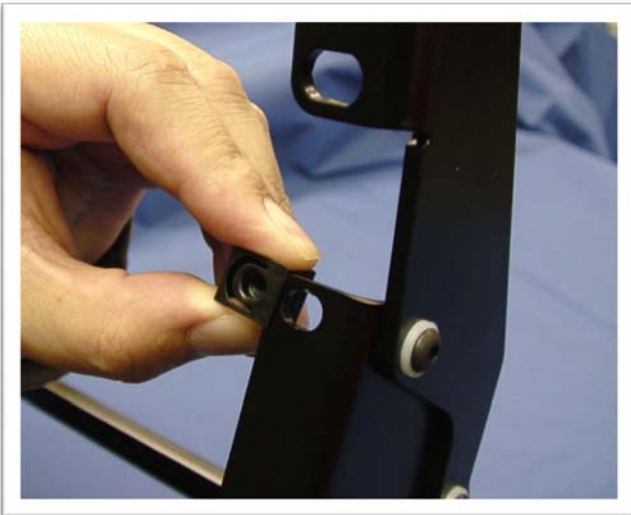
**STEP 8**

Install the rackmount ears as shown below:  
(2U for the SE-1000) or (3U for the SE-800)



**STEP 9**

Install the Tinnerman clips onto all of the rackmount holes.



Your RKM is now ready for action!

